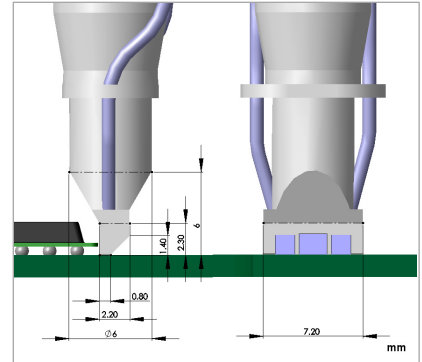


Side Viewing BGA lens with Low Aperture 90° optical head

Item no. OP-006 550



For visual inspection of solder (balls) of BGA, FBGA, CSP and Flip-Chip packages with stand-off down to 0.05 mm (50 microns). Made of precision optics and high quality ESD-protected housing which protects the micro-prisms of the optical head from accidental damages.

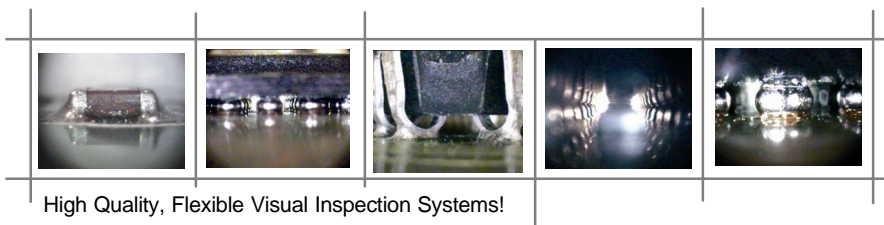
This lens is specially designed for BGA inspection applications that require high image quality, high degree of flexibility and long-life operation. The built-in, high-intensity and long-life LEDs provide adequate cold illumination without need of external light source.

In addition to BGA inspection, this small lens can also be used for side viewing solder paste, flux mixtures, wetting and allows inspection of any component. Magnification of the lens can be changed from 3X (~150 mm object distance) to 150X (~0.5 mm object distance) displayed on a 22" monitor.

This low-aperture BGA inspection lens is easily snapped onto the Flexia Definition video microscopes.

Specification

- | | | |
|---------------------------------------|--|---------------------------------|
| On-screen Magnification (22" monitor) | • ~ 150x – 3x with standard Flexia | (~ 250x – 2x mm with Flexia HM) |
| Working distance range | • ~ 0.5 – 150 mm with standard Flexia | (~ 0.8 – 8 mm with Flexia HM) |
| Field of view | • ~ 2.0 – 100 mm with standard Flexia | (~ 1.3 – 8 mm with Flexia HM) |
| Depth of focus | • ~ 10 mm at 3x magnification. ~ 1.2 mm at 250x magnification. | |
| Illumination | • Integrated long life cool white LED | |
| Mounting system | • Attachable to Camera with quick snap function | |
| Minimum Stand-off | • ~ 0.05 mm (50 microns) | |
| Size of the optical head tip | • 7.2 x 2.2 mm (WxD) | |
| Foot print of the optical head tip | • 7.2 x 0.8 mm (WxD) | |
| Required free working area | • ~ 1.2 - 2.2 mm around BGA package (depending on surrounding component heights) | |
| Size of complete lens | • 83(L) x 20(F) mm. (Max 83x30 mm including Focus position adjustment pin) | |
| Weight of complete lens | • 60 gr. max | |
| Storage Environment | • - 10° – +60° C, Max 95% RH, non-condensing | |
| Operating Environment | • 0° – +45° C, Max 90% RH, non-condensing | |
-
- | | |
|-------|---|
| Other | - Exchangeable Optical head |
| | - Built-in LED illumination system |
| | - Focus position adjustment pin & lock |
| | - Made of high quality stainless steel and aluminium material |
| | - ESD protected (conductive head and body) |



High Quality, Flexible Visual Inspection Systems!

